

OPTX AUSTRALASIA®

TECHNOLOGY WITH FOCUS

Optx•20/20®

HYDROTAC™ LENSES

Provides magnification and protection in one!

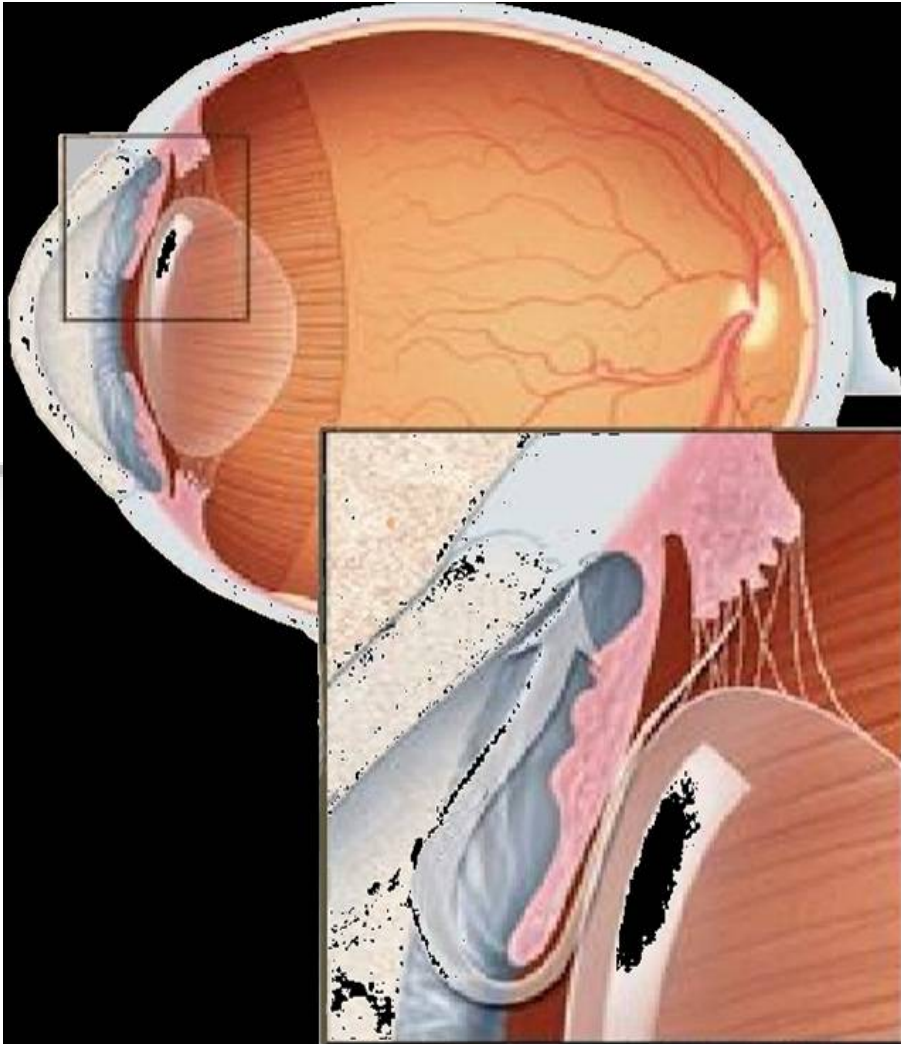


Facts:

- **80% of the population between ages 40-60 require readers to see up close as a result of a condition called Presbyopia.**
- **By 2011 the average age of the workforce will be 39 years.**
- **Many workers wearing protective eyewear also require magnification to read or see detail at work.**
- **Prescription eyewear is expensive – average cost \$300/\$500.**



What is Presbyopia?



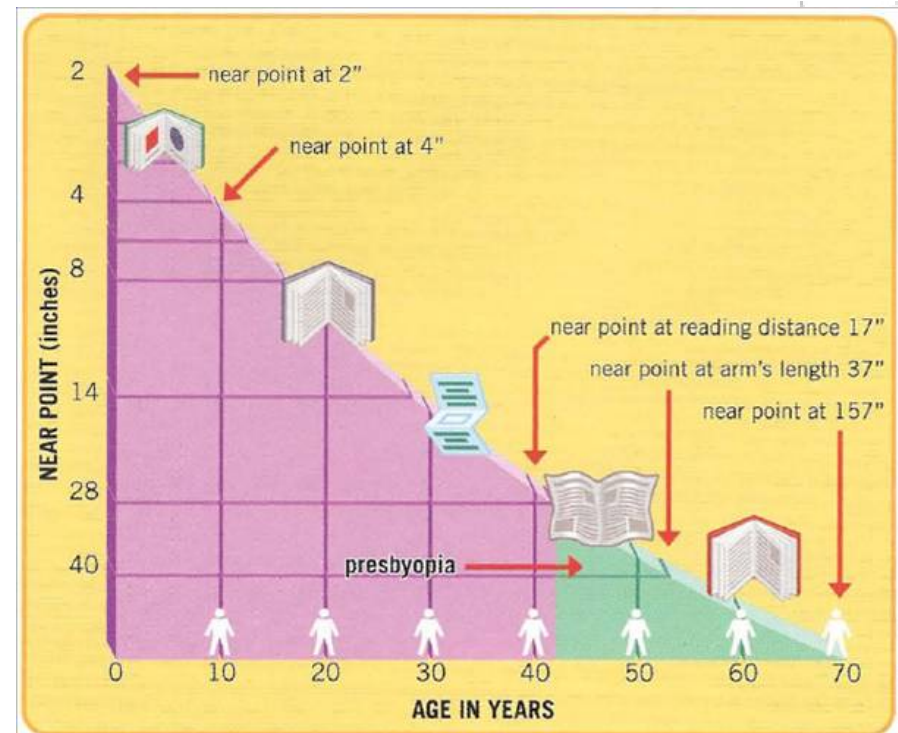
- The **Lenticular** lens is similar to a soft water filled plastic bag.
- Perimeter muscles which attach like strings around the lens perimeter are the **Zonular** muscles.
- The **Zonules** pull the lens outer sack displacing an aqueous interior to the lens center- making the lens center thicker to create focus ability when viewing literature or small objects.
- The ability of this lens to go from thin to thick and back, allowing you to focus on distance objects then back to close-up objects is called **Accommodation**.
- At around age 42, the outer capsule of the lenticular lens stiffens to the point where the *zonular* muscles can no longer bring things into focus. This is the start of **Presbyopia** and the need for reading glasses or adding OPTX•20/20 magnification to protective eyewear.



Signs Symptoms of Presbyopia?

Signs include increased difficulty in reading normal size print, telling the time on your watch, accurately seeing instrumentation readouts (like the speedometer in the car).....etc.

Symptoms include headaches & blurred vision due to the added strain of trying to read small print or perform tasks at close range



The Solution:

**protective
eyewear
with**

OPTX•20/20[®]
HYDROTAC™ LENSES



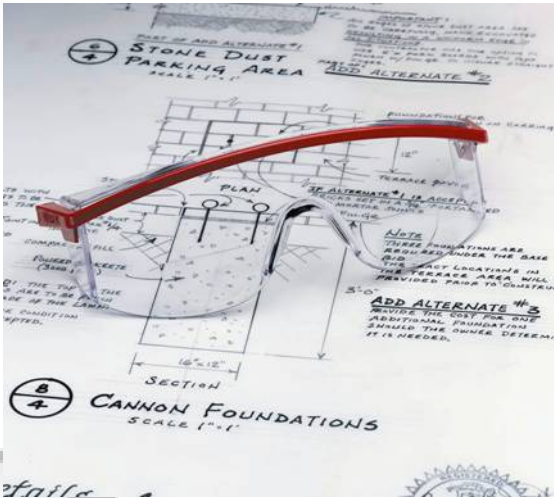
What are OPTX 20/20[®] HydroTac[™] Lenses?

A “water adherent” soft lens that bonds and integrates with any safety eye wear.



- Immediate Magnification
- Flexibility - Sun or Clear Safety
- Light weight
- Affordable
- Removable & Reusable
- Precision Optical Quality

Applications for OPTX 20/20[®] HydroTac[™] Lenses?



Safety Glasses/Sunglasses

Safety Goggles & Face Shields



Advantages:

-  **Increases safety eyewear compliance**
-  **Provides magnification and protection in one**
-  **Reusable and a fraction of the cost of prescription eyewear**
-  **Easy to install and positions *anywhere* on lens for specific applications**



Saving the Cost of a Workplace Incident

| | | |
|---|----------|------------------|
| Example Direct cost of an incident | | \$10,000 |
| Estimated Indirect cost of an incident | + | \$30,000 |
| (Three times direct) | | |
| Total nominal cost of the incident (A+B) | = | \$40,000 |
| Profit margin on job ÷ 5% (0.05) | | |
| Added revenue Company must | | |
| [\$40,000/0.05] | | |
| generate to recover injury cost (C/D) | = | \$800,000 |

OSH Non-Compliance

With increased enforcement comes additional cost exposure to fines and bad publicity that negatively impacts operating expenses.



Aging Work Force

It is estimated that by 2011 the 39 and-older age group will make up 50% of the workforce.

In this hypothetical case, the company may have prevented the hypothetical incident with a \$10 pair of safety glasses AND a few dollars for a pair of **OPTX 20/20® Stick-On Magnifying Lenses.**

OPTX•20/20

Increase compliance in your company with the OPTX•20/20 at a fraction of the cost of prescription safety eyewear.

Available in the following diopters:
+1.25, 1.50, +1.75, +2.00, +2.50, & +3.00

STICK-ON MAGNIFYING LENSES

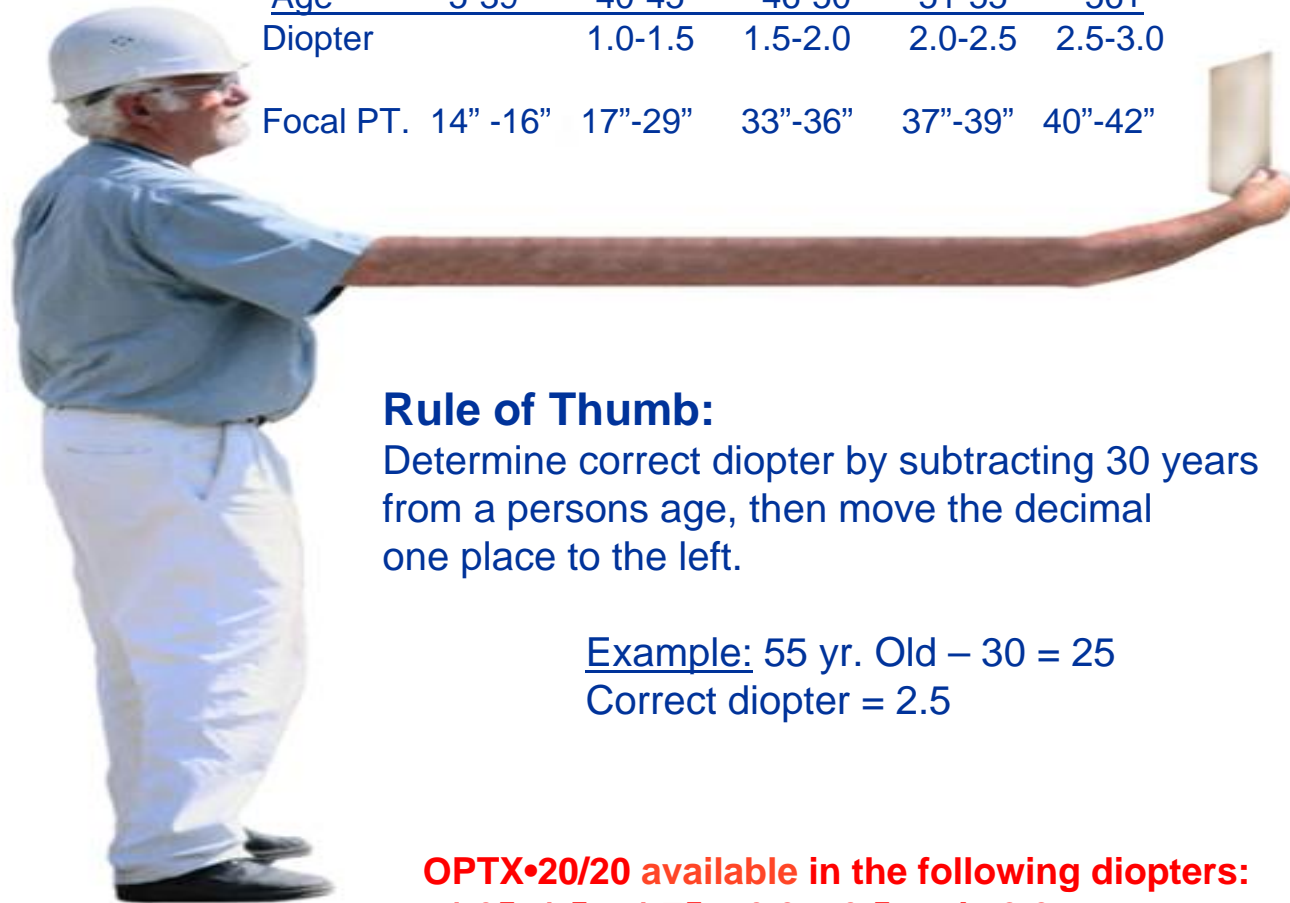


Teach YOUR Safety Glasses to see close up!



What is my Diopter?

| Age | 5-39 | 40-45 | 46-50 | 51-55 | 56+ |
|-----------|----------|---------|---------|---------|---------|
| Diopter | | 1.0-1.5 | 1.5-2.0 | 2.0-2.5 | 2.5-3.0 |
| Focal PT. | 14" -16" | 17"-29" | 33"-36" | 37"-39" | 40"-42" |



Rule of Thumb:

Determine correct diopter by subtracting 30 years from a persons age, then move the decimal one place to the left.

Example: 55 yr. Old – 30 = 25
Correct diopter = 2.5

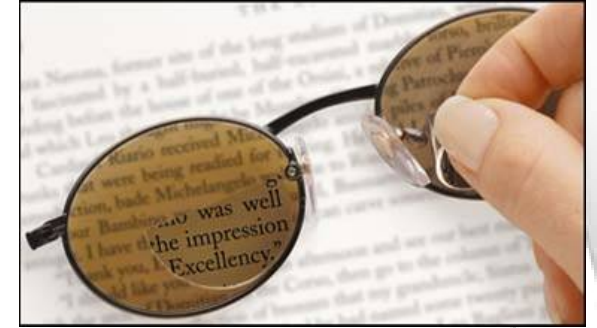
**OPTX•20/20 available in the following diopters:
+1.25, 1.5, +1.75, +2.0, +2.5 and +3.0**



OPTX•20/20 Installation: Reusable & Easy

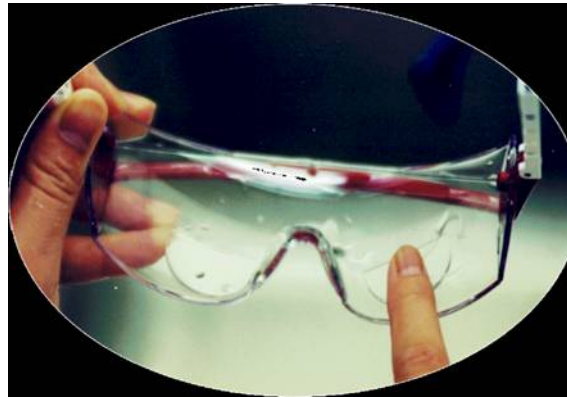
1

With inside wells of protective eyewear
Clean and wet.



2

Place lens curved
side down & position
low and approx. 2 ½”
apart.



3

make sure that
lenses do not
obstruct
distance vision.



For more information contact:

Ron Greenwood

Product Sales & Safety Consultant

Call: 1300 6789 20

Mob: 0417 965 383

Email: ron@optxaustralasia.com

